

# Kirkleatham Museum

## Visual Story



# How to use this Visual Story

This booklet tells you about different areas of the museum and the people who work there.

Each Section will tell you about things you might see, hear, touch or smell.

## Sensory Icon Key

Some of the areas will have one or more icons below to let you know what it is like in that area of the museum.



Bright



Busy



Dark



Touch



Noisy



Quiet



Smelly

# This is Kirkleatham Museum



When you arrive you will see a car park and a children's play area with picnic benches.

It will take you about two minutes to walk from the car park to the museum and you will need to cross two roads .



Outside the museum there is a large water fountain, this can be noisy.



# Reception and Gift Shop

When you enter the museum you will see a large desk.



There will usually be a member of staff dressed in blue behind the desk who will greet you.

The museum is free but the staff are there if you need any help or have any questions.



To your left you will see the museum shop.



This area can be busy so you might hear lots of people chatting.



There is a balcony above so you might hear voices or noises from there.

# The War Room

The World War 1 area has lots of information about life during the two World Wars and how they affected people in the area.



There is music playing and a television showing a film of an RAF training flight.



This room is quite dark.



Opposite this room are the toilets and a lift.

# Steel Stories Exhibition

**On the first floor are rooms that have lots of information about the history of the steelworks in Redcar and what it was like to work**



At the top of the stairs is the room with the lift.

This room might look different each time you visit.



The next room is made to look like a locker room where the Steel Workers would have kept their belongings while they were at work.



You might smell smoke, but don't worry, this is just pretend to give you an idea of what the steelworks would have smelt like.



You will hear voices chatting and a man whistling in this room.



You can press the buttons on the model to light up areas of the steel works.

You can touch some of the items in the lockers.



# Steel Stories Exhibition

The next room is the corridor above the entrance and shop.

Along the wall are objects from the steel industry.



You can see a film about bridges that were built using steel made in Redcar.

There are models showing what different areas of the steel works looked like.



This area is very bright.



You will be able to hear noises from the shop below .

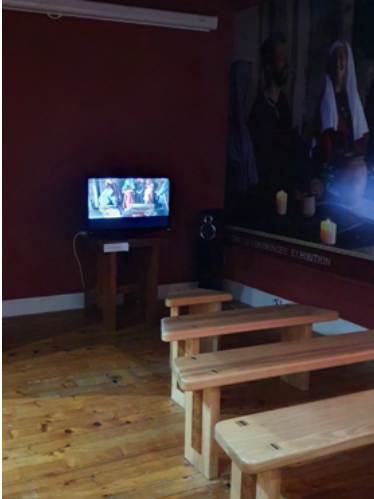


At the end of this corridor is a small room with benches.

You will see a large screen playing clips about the steel industry.

# Anglo Saxon Exhibition

After you have looked at the Steel Stories exhibition you can go upstairs to find out what life was like in the Anglo Saxon times.



At the beginning there is a film about the Saxon princess.

You can sit down and watch if you would like to, it is only 6 Minutes long.



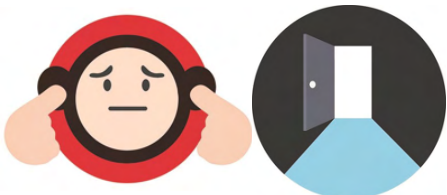
There are models and pretend animals to show you what people's homes were like in the Anglo Saxon times.

But don't worry, the people and animals are not real.



There are costumes which you can dress up in, games to play and also a reading area.

There is a model dragon floating from the ceiling, why not say hello!



The film area can be dark and you will hear talking and music.



# Anglo Saxon Exhibition



You can see a model of the Saxon Princess burial that was found at Street House Farm near Loftus.

She is thought to be a princess because she was buried with gold jewellery.



In this room you may hear the sound of birds.

There is a small television playing clips of the archaeologists finding the objects.

# Gertrude Bell Exhibition

Here you can find out about Gertrude Bell, a famous English Archaeologist who grew up in Redcar.



You will see a big, friendly, pretend camel similar to the one Gertrude is riding in the picture.

# Temporary Exhibition Galleries



The exhibitions in these galleries change often so might be different each time you come.

You can contact the museum before your visit to find out what is on.

## Additional Information



When you visit the museum you might see peacocks walking around the grounds.

The Owl Centre is nearby so you can sometimes hear the birds.



There are toilets in the park as well as the museum.



If you hear a loud siren, that means we need to leave the building. Follow a member of staff or make your way through any exit door.

The meeting point during a fire alarm is by the ??. There is another meeting point ??

## Quiet Times



We have a quiet hour every Sunday between 10am and 11am so you can visit us when we are quieter, have fewer visitors and the sounds are turned down.

If you would like to join in a quieter craft session with more time and space to take part then you can come along during the school holidays every Thursday between 3pm and 4pm.

Your family and friends can come along too.

If you would like to borrow ear defenders or sensory toys please ask at reception.

If you have any queries then please contact Kirkleatham Museum Access Officer, Ellen Bissell.

Tel: 01642 496426

[Ellen.Bissell@redcar-cleveland.gov.uk](mailto:Ellen.Bissell@redcar-cleveland.gov.uk)